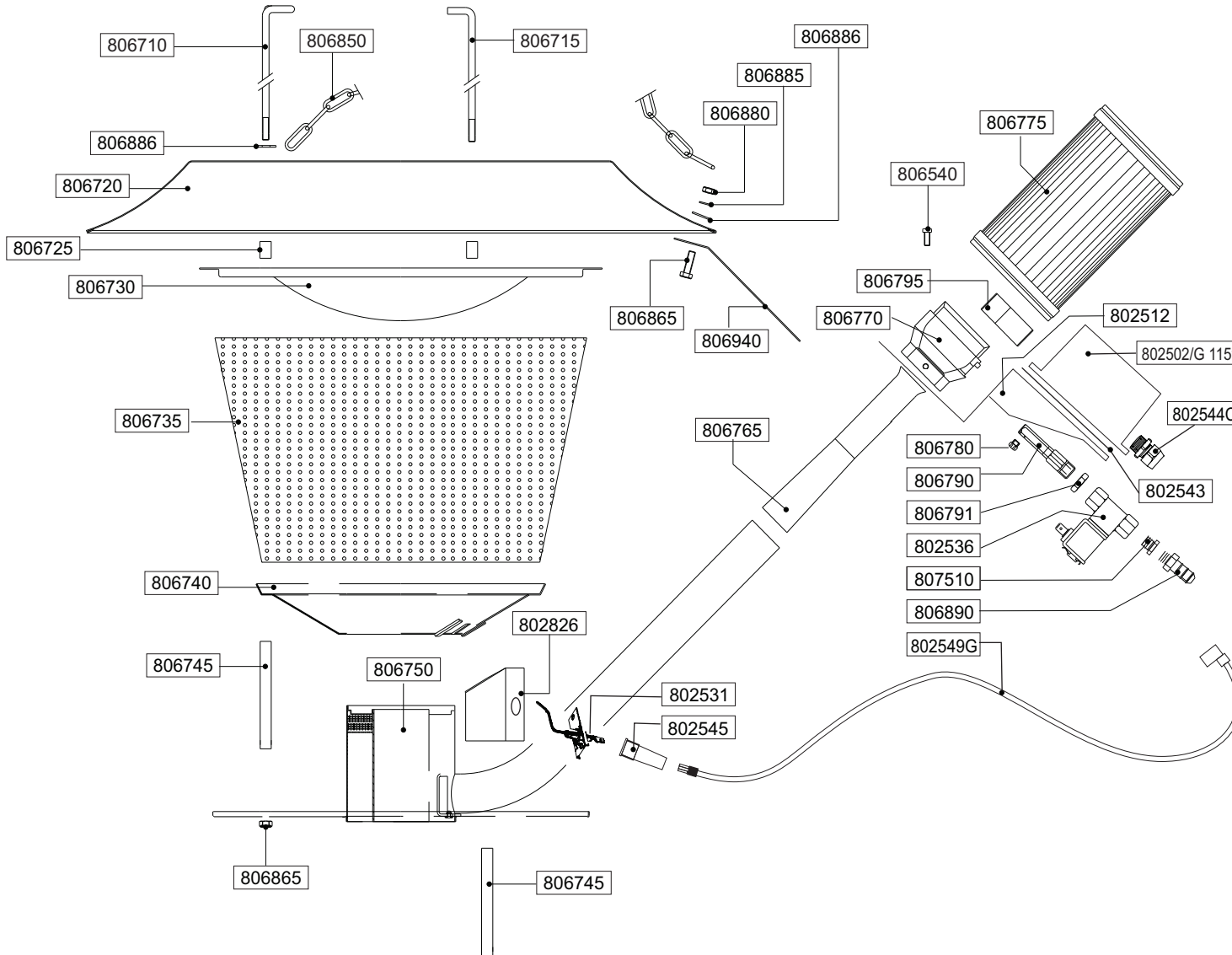


G12 DSI Parts Identification



Part #	Qty.	Description
802502/G	1	DSI Control Box G12 115 VAC
802512	1	DSI Mounting Bracket G12
802531	1	DSI Electrode & Sense Unit G12
802536	1	DSI Solenoid 1/4" 120 V G12
802543	1	DSI Gasket 5 3/4" x 3 3/4"
802544C	1	DSI Strain Relief PVC 3/8"
802545	1	DSI Boot Hi-Voltage
806540	1	No. 33 G12 Screw Stainless M5 x 10
806710	1	No. 51 G12 Connecting Eye Rod
806715	2	No. 52 G12 Connecting L Rod
806720	1	No. 53 G12 Reflector
806725	3	No. 54 G12 Short Spacer
806730	1	No. 55 G12 Emitter Top Plate
806735	1	No. 56 G12 Emitter
806740	1	No. 57 G12 Bottom Plate
806745	3	No. 58 G12 Long Spacer
806750	1	No. 59 G12 Burner Assembly
806765	1	No. 60 G12 Venturi
806770	1	No. 61 G12 Intake Adapter
806775	1	No. 62 G12 Dust Filter
806780	1	No. 63 G12 Jet LP 2.1
806790	1	No. 64 G12 Jet Holder
806791	1	Fixation Nut
806795	1	No. 65 G12 Jet Holder Retainer
806820	1	DSI Sprk Wire G12
806826	1	No. 71 G12 DSI Electrode Brkt.
806850	1	No. 75 G12 Suspension Chain
806855	3	No. 76 G12 M6 Nylock Nut
806865	1	No. 78 G12 Screw M6 x 16
806880	1	No. 81 G12 Nut M6
806885	1	No. 82 G12 Lock Ring M6
806890	1	No. 83 G12 Hose Barb
807510	1	No. 67 G12 1/4 x 1/8 in, Bushing